

WOHNEN IN DER  
MIKROPOLE MATTENHOF

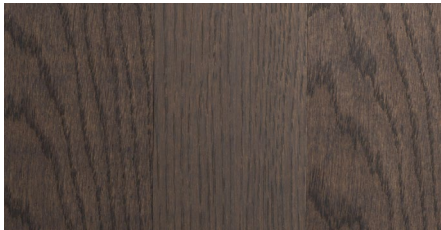
## STILVARIANTE: INDUSTRIAL

AM MATTENHOF 4A/  
4B  
HAUS M1.5  
4.-6. OG

### ZIMMER

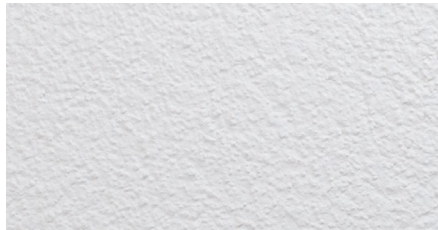
#### Boden

Parkett: Eiche Europa, granitgrau, matt versiegelt



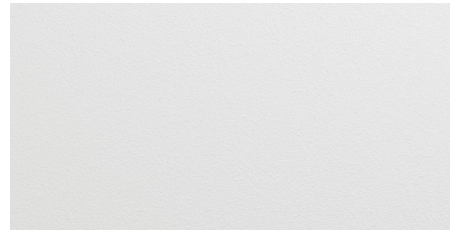
#### Wand

Abrieb weiss gestrichen



#### Decke

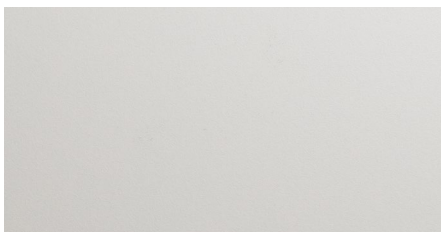
Weissputz weiss gestrichen



### KÜCHE

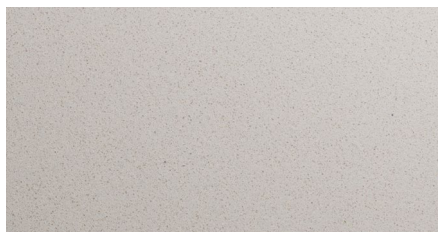
#### Küchenfront

Melaminharz beschichtet, seide



#### Arbeitsplatte

Quarzkomposit corda, 2 cm



#### Rückwand

Spiegel



#### Griff

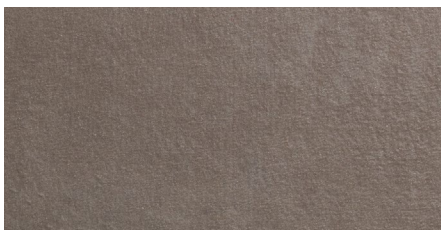
Bügelgriff  
Edelstahl



### BAD

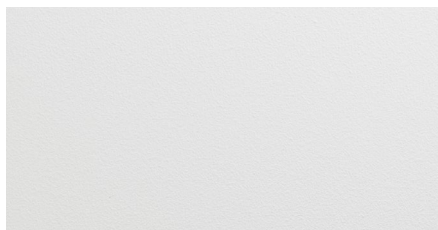
#### Boden & Wand

Feinsteinzeugplatten graubraun,  
Boden: 60 cm x 60 cm / Wand: 30 cm x 60 cm



#### Decke

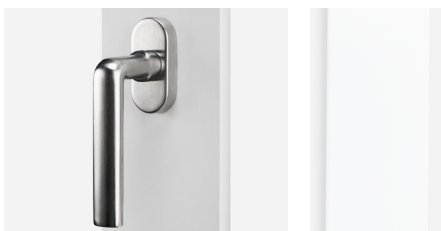
Weissputz weiss gestrichen



### SONSTIGES

#### Fenster

Holz weiss gestrichen,  
Griff Messing matt

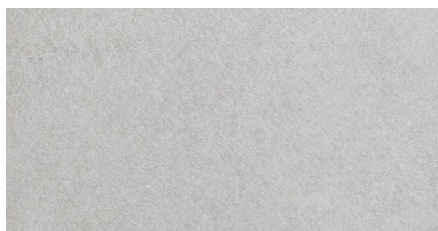


#### Sockelleiste

Holz  
weiss gestrichen

#### Loggia- / Balkon- / Terrassenboden

Feinsteinzeugplatten grau, 60 cm x 60 cm



#### Innentüren

Holz weiss gestrichen,  
Griff Messing matt

